



2012 3rd Quarter Crime Stats for Rochester, NY

2012 Part I Crime (Jan-Sept. Only)

Crime Type	2011	2012	% Change	5 Yr. Avg	2012 % Change from 5 Yr. Avg.
Homicide	21	29	38.1%	30	-3.3%
Rape	60	66	10.0%	68	-2.4%
Robbery	521	571	9.6%	658	-13.2%
Agg. Assault	857	875	2.1%	847	3.3%
<i>Violent Crime Total</i>	1,459	1,541	5.7%	1,602	-3.8%
Burglary	2,449	2,217	-9.5%	2,156	2.8%
Larceny	5,203	5,554	6.7%	5,387	3.1%
MV Theft	544	464	-14.7%	823	-43.6%
<i>Property Crime Total</i>	8,196	8,235	0.5%	8,366	-1.6%
Total Part I Crime	9,655	9,776	1.3%	9,968	-1.9%



Key 2012 Part I Crime Challenges through 9/30:

- **Large increase in YTD shooting victims:**
 - Up 79% from 2011 (last year was lowest year in 10 years)
 - Up 14% from 10-year average
 - Highest total in 5 years, 4th highest total in 10 years
 - Aggravated Assaults overall up slightly YTD (+2.1%), and against the 5 year average (+3.3%)
- **Homicides are up but still below the 10 year average**
 - Up 8 homicides from 2011 (38% increase)
 - Current total comparable to the 5-year average
 - 3rd lowest YTD total in 10 years
- **Small increases in Rape and Larceny:**
 - Larceny up 6.7% from last year- 2nd highest total in 5 years, but only 5th highest in last 10
 - Rape up 6 from last year (10%), but well below the 10 year average (-20%)

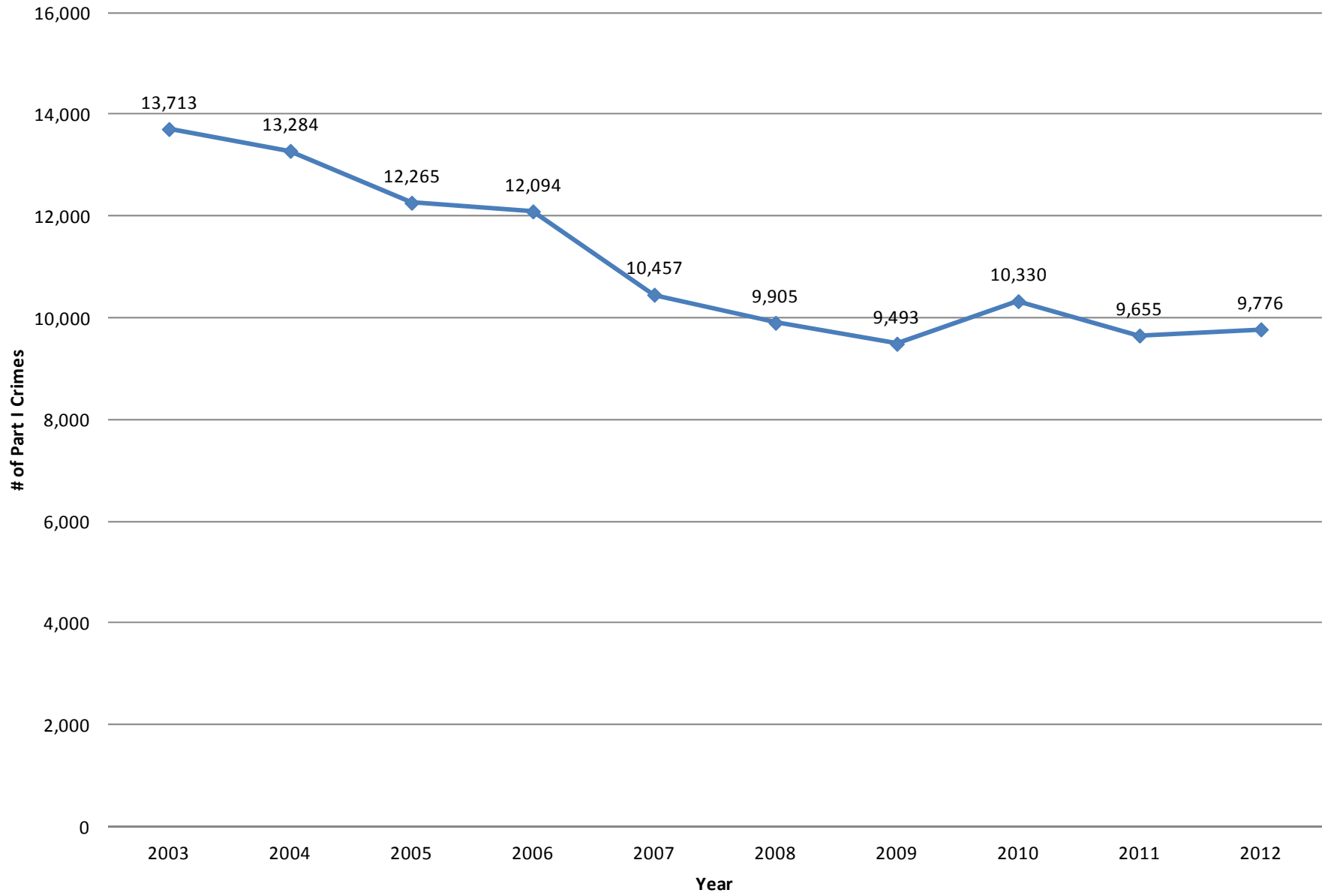


2012 Part I Crime Successes through 9/30:

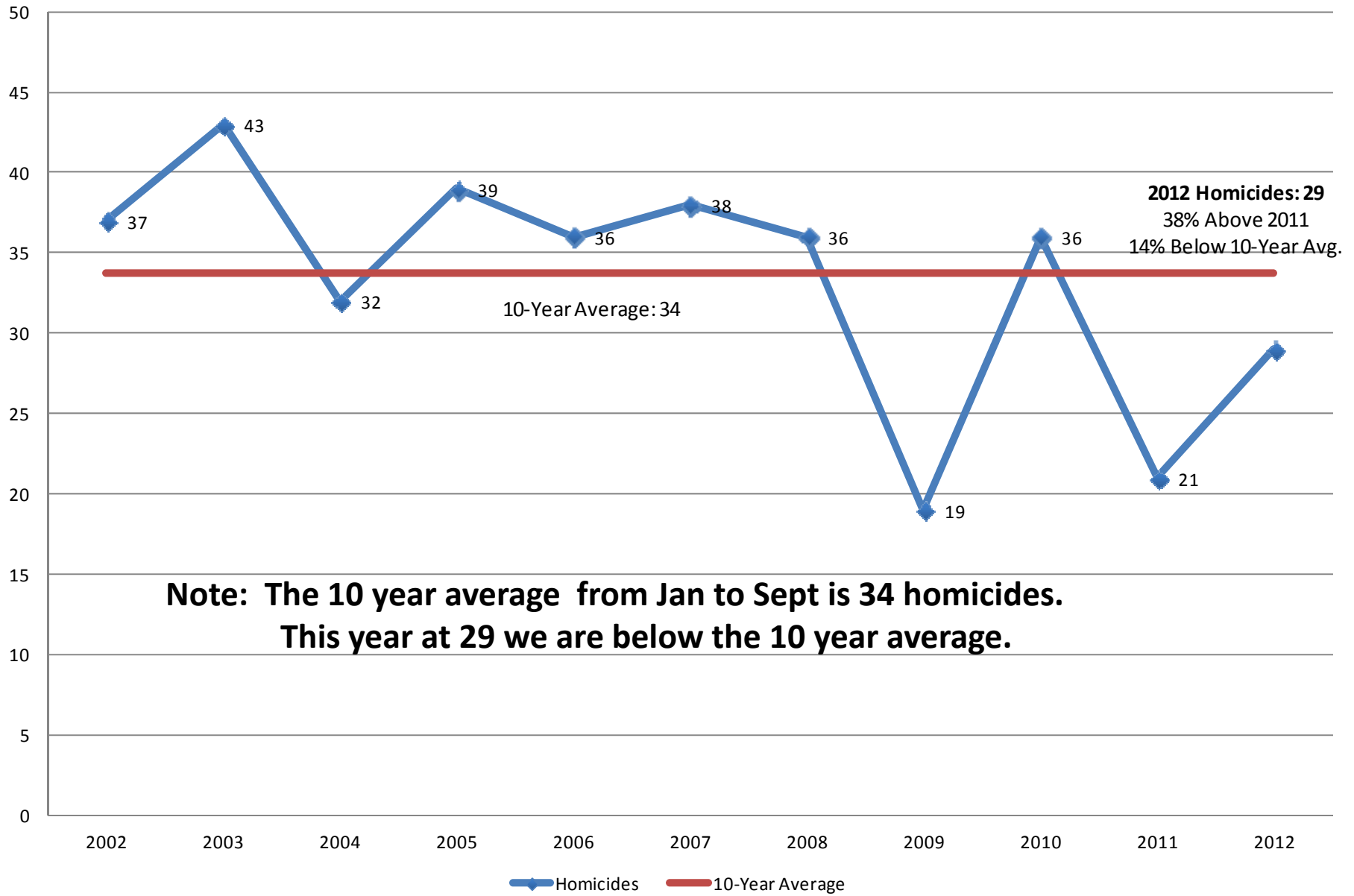
- **Part I crime on pace to be 3rd lowest total in last 25 years**
- **2nd Lowest total of Robberies in 10 years**
 - Robberies are up 13% from last year, but 2011 was lowest total in 25 years
 - 2012 total is 22% lower than 10 year average
- **Burglaries down 10.5% (year-to-date)**
 - Still a challenge- YTD total is 3rd highest in 10 years
- **Motor Vehicle Theft at lowest level in 10 years**



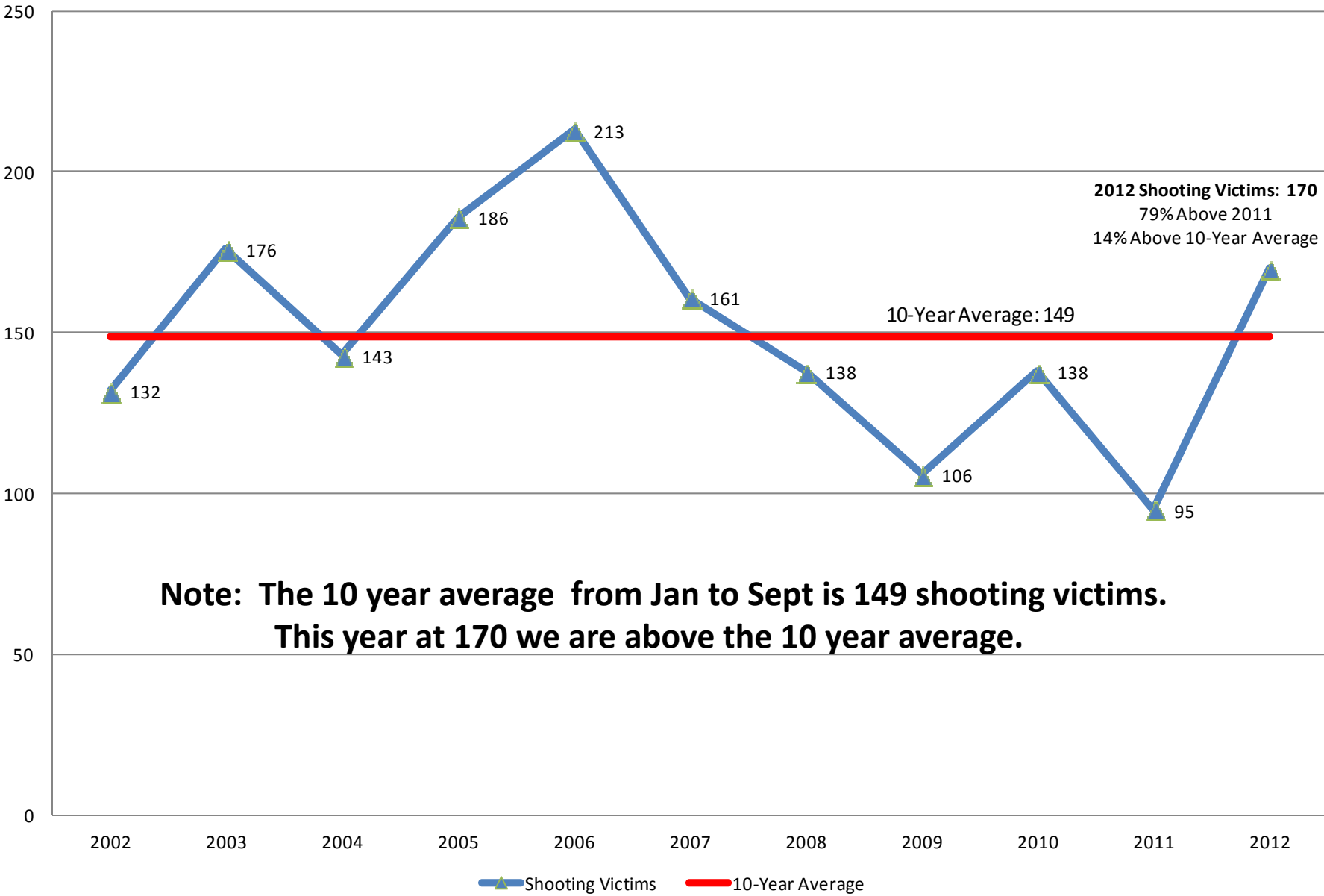
10 Years of Rochester Part I Crime (Jan-Sept Only)



10 Years of Rochester Homicide (1/1-9/30 only)

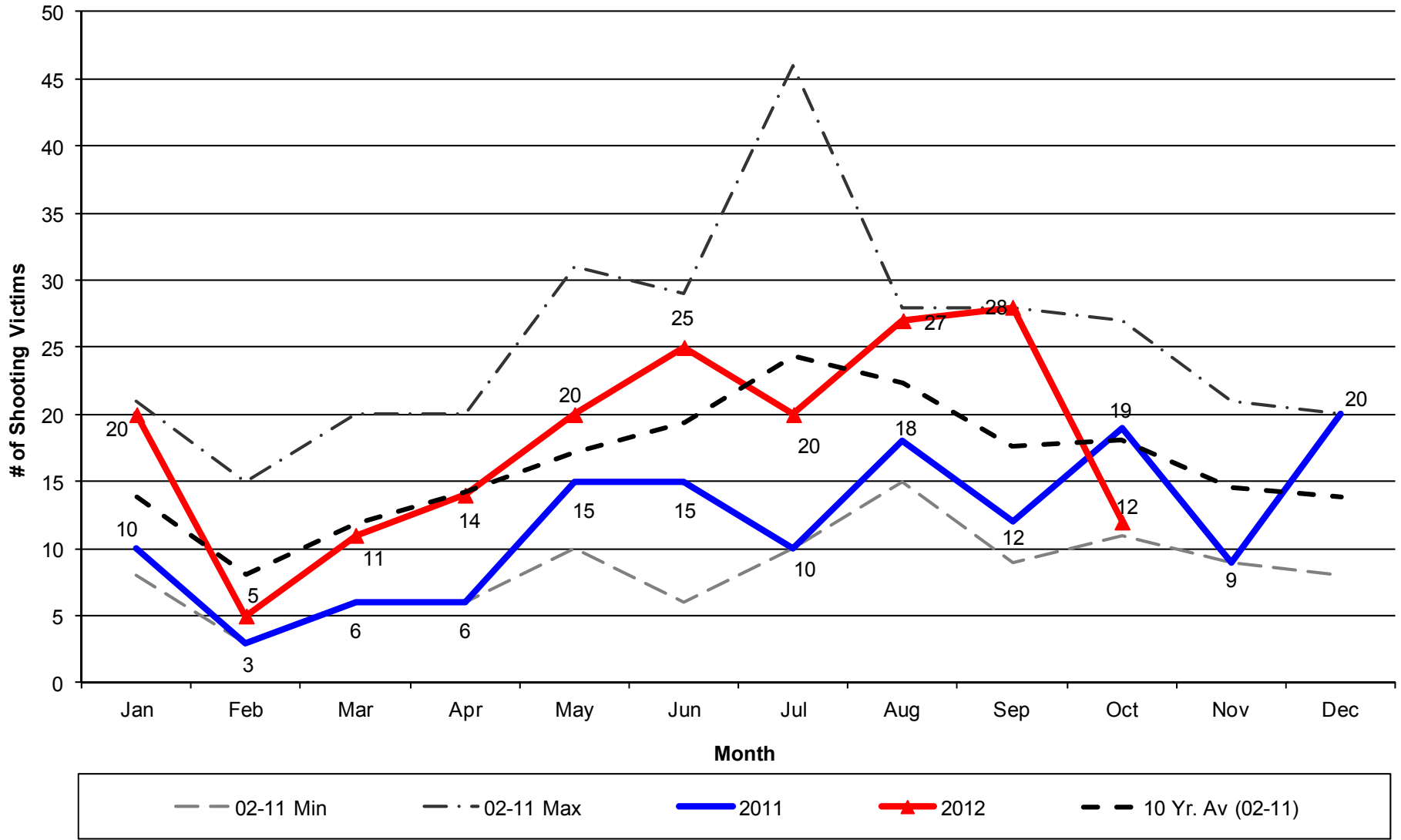


10 Years of Rochester Shooting Victims (Jan-Sept. only)



**Rochester Shooting Victims (Homicide, Assault 1st, Assault 2nd)
Trends by Month (2002-2012) (YTD Through 10/15)**

2012 YTD : 182
2011 YTD: 105
Change: 73.3%



Gang Involvement in Homicide and Non-Fatal Shootings

- % of shootings that are gang-involved:
 - 2011: 66.3%
 - 2012: 68.2%
- % of homicides that are gang-involved:
 - 2011: 50%
 - 2012: 62.1%

*****gang-involved definition:** V or S was a known gang member, however, the crime may or may not be directly related to the activities of the gang. Example of a crime not directly related to the gangs' activities: a Gang member shoots someone in a dispute over an ex-girlfriend***



Historical Context (Jan-September 2012)

Crime Type	5-Year Rank	10-Year Rank
Homicide	3rd	3rd Lowest
Rape	2nd Highest	4th Lowest
Robbery	2nd Lowest	2nd Lowest
Agg. Assault	2nd Highest	3rd Highest
Violent Crime	3rd	3rd Lowest
Burglary	3rd	3rd Highest
Larceny	2nd Highest	5th Highest
MV Theft	Lowest	Lowest
Property Crime	2nd Highest	4th Lowest
Total Part I Crime	3rd	3rd Lowest

**Note: Due to a change in how Aggravated Assaults are reported, Agg. Assault data prior to 2005 are not comparable to Agg. Assault data from 2005 to present. Per a clarification in UCR standards, the state began mandating the reporting of the threat of injury with a weapon (known as "Menacing 2nd" in NYS Penal Law) as an Aggravated Assault in 2005. Prior to that, Menacing was listed as a Simple Assault, a Part II crime.*



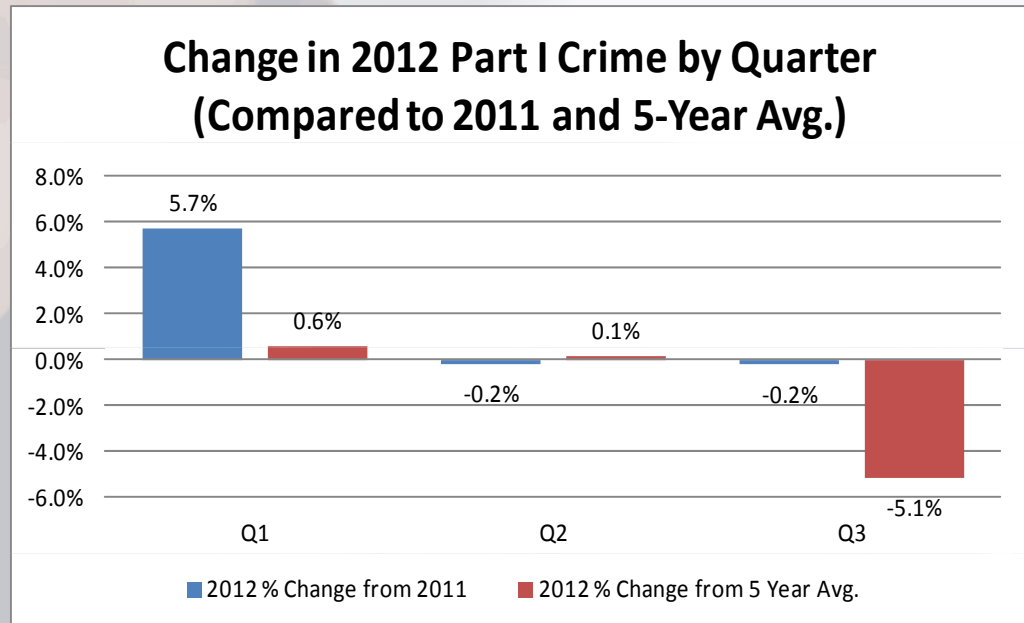
Gun Recoveries (Jan-September)

Gun Recoveries by RPD (Jan-Sept Only)		
Year (Jan-Sept)	Total Guns	Crime Guns
2002	712	304
2003	794	426
2004	774	387
2005	919	324
2006	800	411
2007	712	336
2008	653	333
2009	619	285
2010	687	362
2011	714	317
2012	887	385
2012 Rank	2nd Highest	4th Highest
11-12 % Change	24.2%	21.5%
5 Yr. Avg.	677	327
% Ch. From 5 Yr. Avg.	31.0%	17.9%
10 Yr. Avg.	738	349
% Ch. From 10 Yr. Avg.	20%	10%



Part I Crime (Jan to Sept 2012)

Year	Total Part I Crime
2001	12,202
2002	12,705
2003	13,713
2004	13,284
2005	12,265
2006	12,094
2007	10,457
2008	9,905
2009	9,493
2010	10,330
2011	9,655
2012	9,776

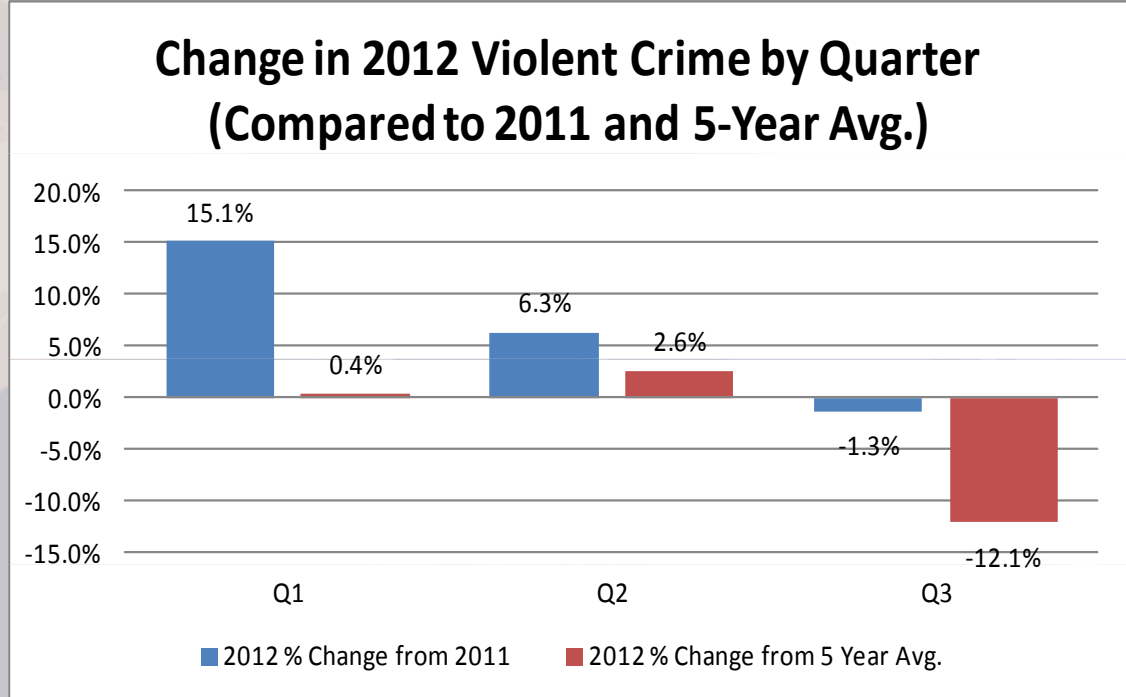


- 3rd Lowest Part I Crime YTD total in 10 years



Violent Crime

Year	Total Violent Crimes
2001	1,471
2002	1,514
2003	1,769
2004	1,643
2005	1,738
2006	2,086
2007	1,751
2008	1,702
2009	1,436
2010	1,664
2011	1,459
2012	1,541



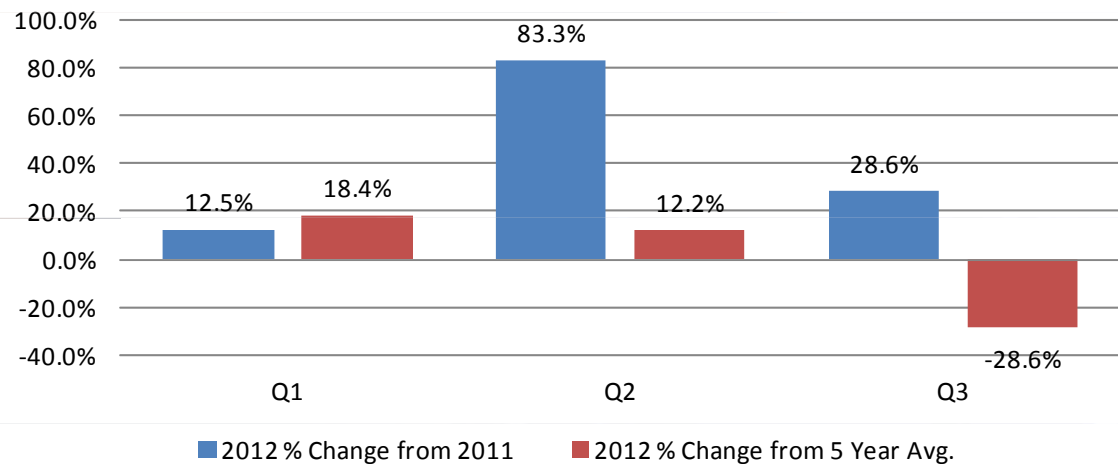
- First two quarters of year were above average, but the 3rd quarter was the lowest since 2006
- 3rd best YTD total in 10 years



Homicide

Year	Homicide
2001	34
2002	37
2003	43
2004	32
2005	39
2006	36
2007	38
2008	36
2009	19
2010	36
2011	21
2012	29

**Change in 2012 Homicides by Quarter
(Compared to 2011 and 5-Year Avg.)**



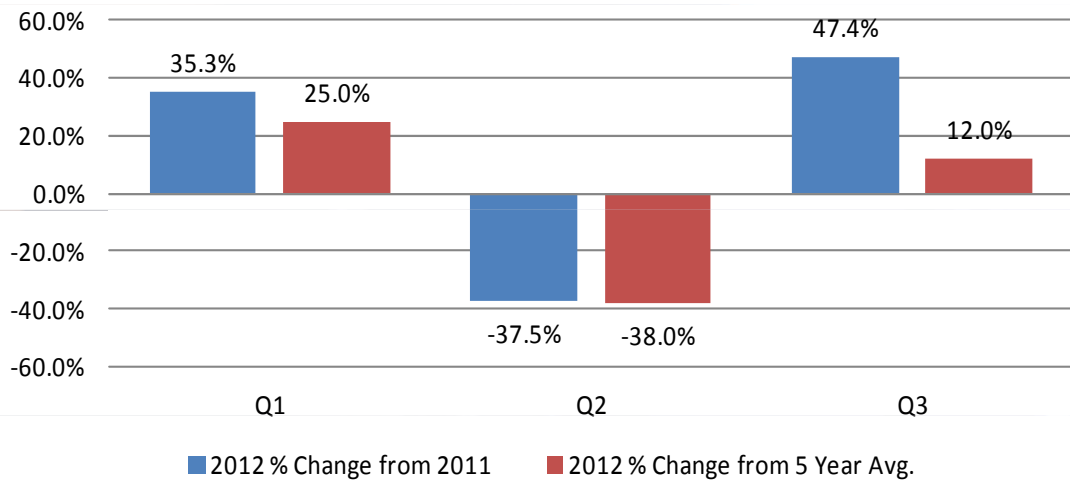
- 71% involved a firearm
- 29 Through Q3, 31 through 10/16
- 3rd lowest YTD total in 10 years
- Includes four children killed in 82 Grape St. arson on 2/18/12



Rape

Year	Rape
2001	88
2002	100
2003	99
2004	100
2005	105
2006	85
2007	82
2008	62
2009	59
2010	75
2011	60
2012	66

Change in 2012 Rape by Quarter (Compared to 2011 and 5-Year Avg.)

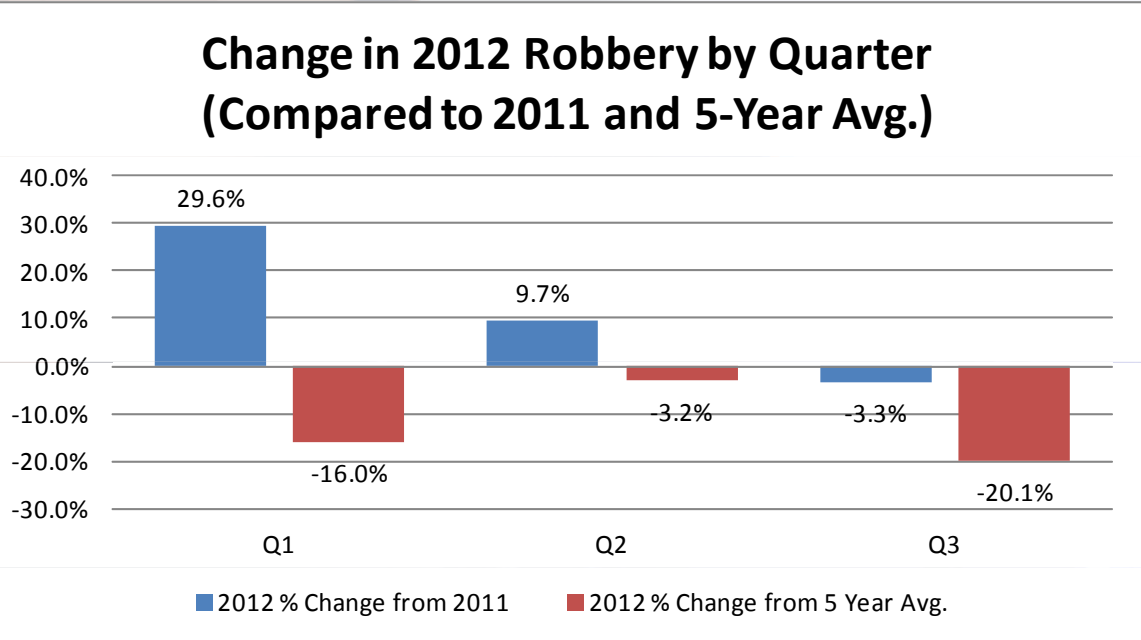


- Intra-family: 20%
- Otherwise known to victim: 55%
- Unknown/Stranger: 25%



Robbery

Year	Robbery
2001	679
2002	657
2003	854
2004	709
2005	741
2006	1,037
2007	804
2008	780
2009	600
2010	584
2011	521
2012	571



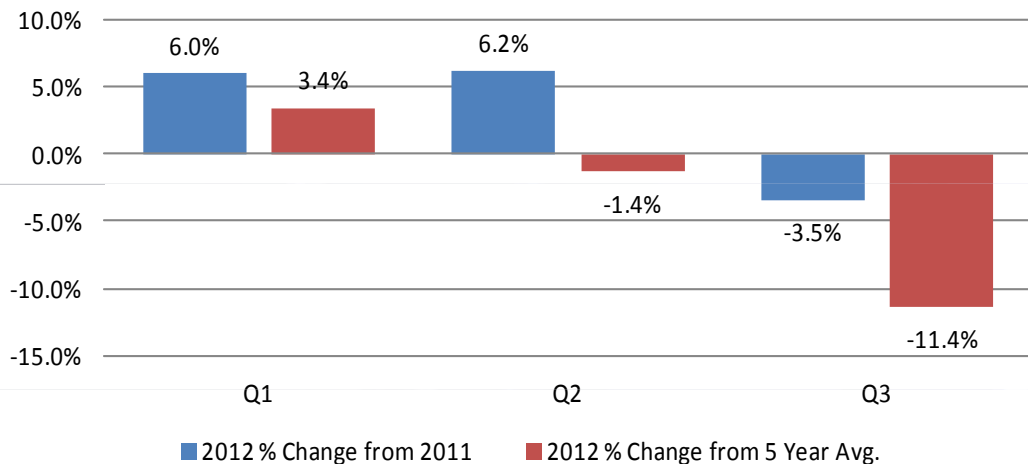
- 2nd lowest YTD total in 10 years, despite 10% increase from 2011, which was lowest year in 25 years
- After increases against 2011 in first two quarters, Q3 was lowest in 10 years



Aggravated Assault

Year	Aggravated Assault
2001	670
2002	720
2003	773
2004	802
2005	853
2006	928
2007	827
2008	824
2009	758
2010	969
2011	857
2012	875

Change in 2012 Agg. Assault by Quarter
(Compared to 2011 and 5-Year Avg.)



3rd highest YTD total in 10 years, driven by 79% increase in shootings from 2011

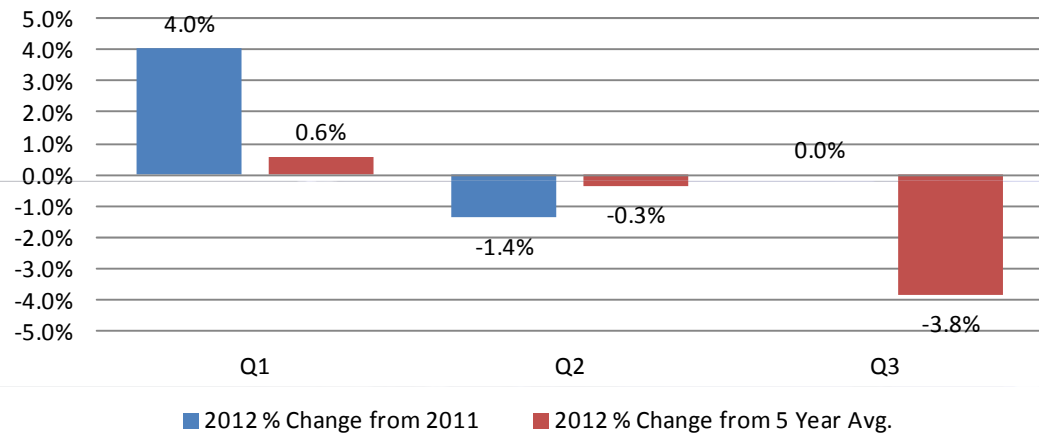
After increases against 2011 in first two quarters, Q3 was best in 5 years, despite near record levels for shootings in Aug. and Sept.



Property Crime

Year	Total Property Crimes
2001	10,731
2002	11,191
2003	11,944
2004	11,641
2005	10,527
2006	10,008
2007	8,706
2008	8,203
2009	8,057
2010	8,666
2011	8,196
2012	8,235

**Change in 2012 Property Crime by Quarter
(Compared to 2011 and 5-Year Avg.)**



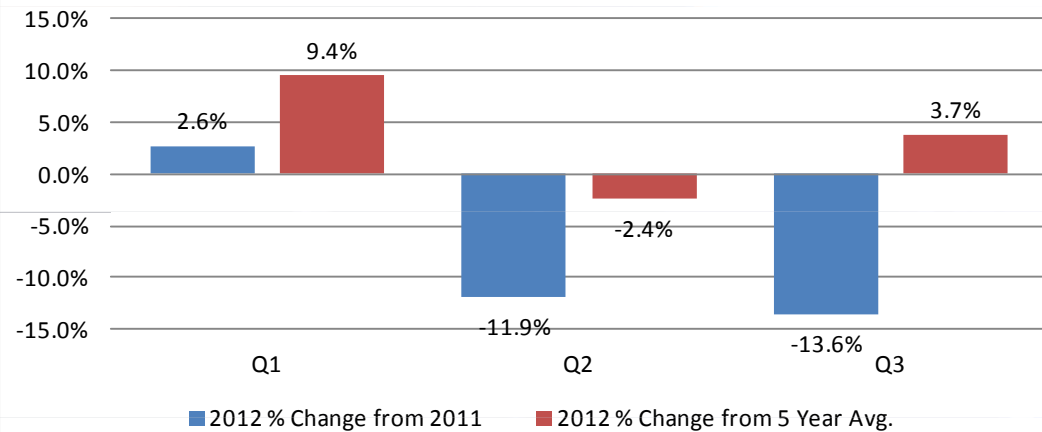
- Increase in all three property crime types in Q1
- Larceny increases in Q2 and Q3 moderated by solid declines in Burglary and MV Theft



Burglary

Year	Burglary
2001	1,850
2002	1,789
2003	1,881
2004	1,963
2005	2,079
2006	1,941
2007	1,857
2008	2,079
2009	1,947
2010	2,446
2011	2,449
2012	2,217

**Change in 2012 Burglary by Quarter
(Compared to 2011 and 5-Year Avg.)**



9.5% YTD reduction due to strong Q2 and Q3

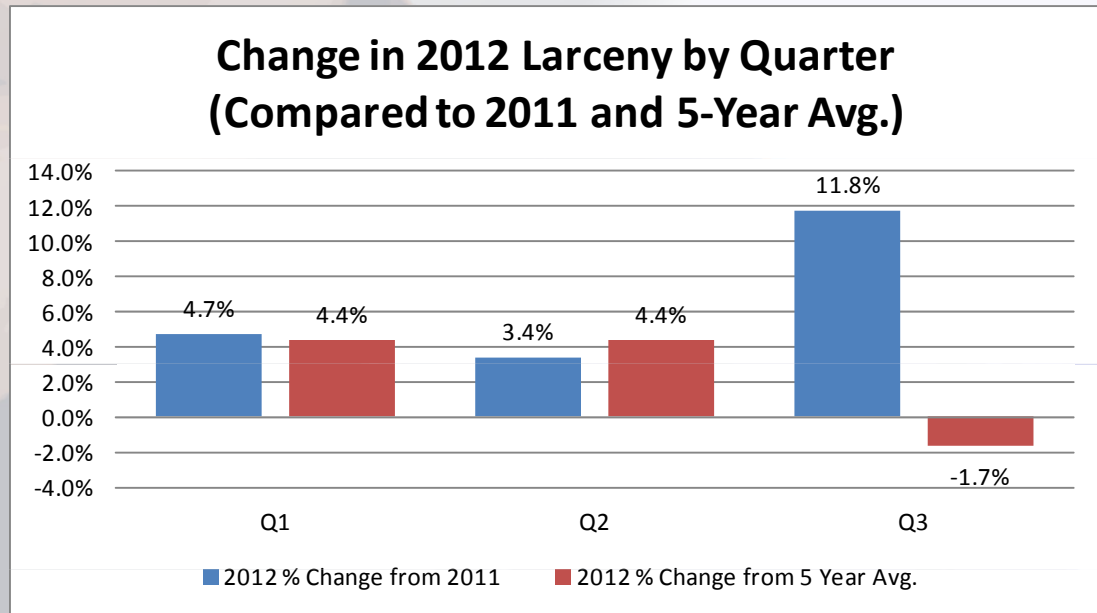
Level overall is still above average:

- 3% above 5-Yr. Avg.
- 9% above 10-Yr. Avg.



Larceny

Year	Larceny
2001	7,361
2002	7,531
2003	7,563
2004	7,391
2005	6,811
2006	6,159
2007	5,539
2008	5,170
2009	5,388
2010	5,635
2011	5,203
2012	5,554

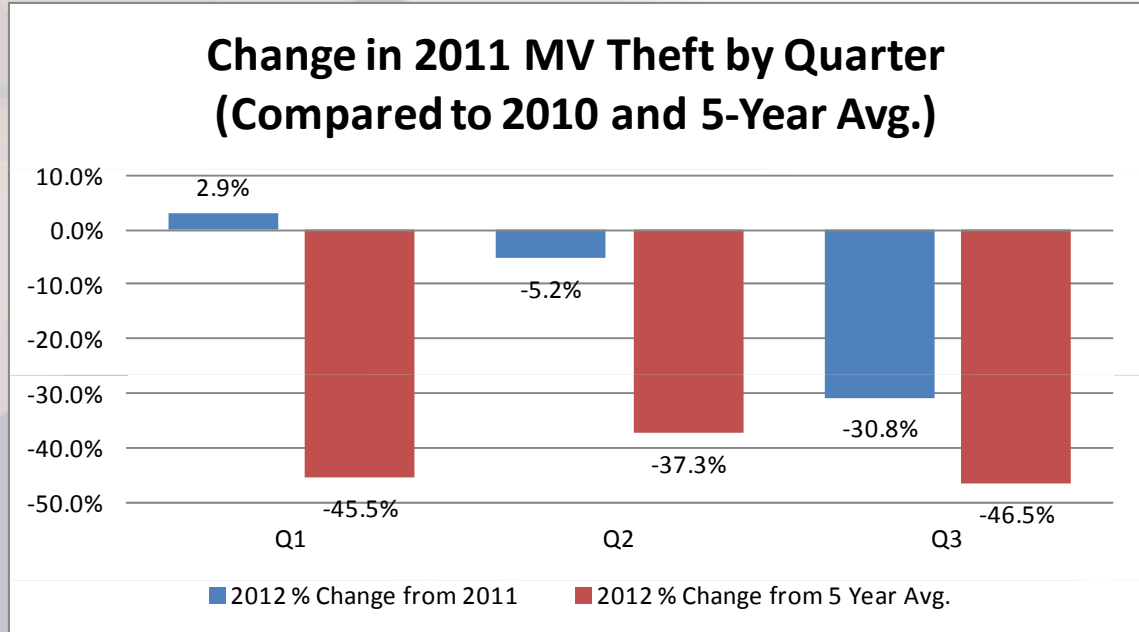


- Downtown Larcenies are down:
 - PSA 50: -19% (west of river)
 - PSA 51: -16% (east of river)



Motor Vehicle Theft

Year	Motor vehicle theft
2001	1,520
2002	1,871
2003	2,500
2004	2,287
2005	1,637
2006	1,908
2007	1,310
2008	954
2009	722
2010	585
2011	544
2012	464



- 6-year trend of major declines continue despite an unusual increase in Q1 this year

